

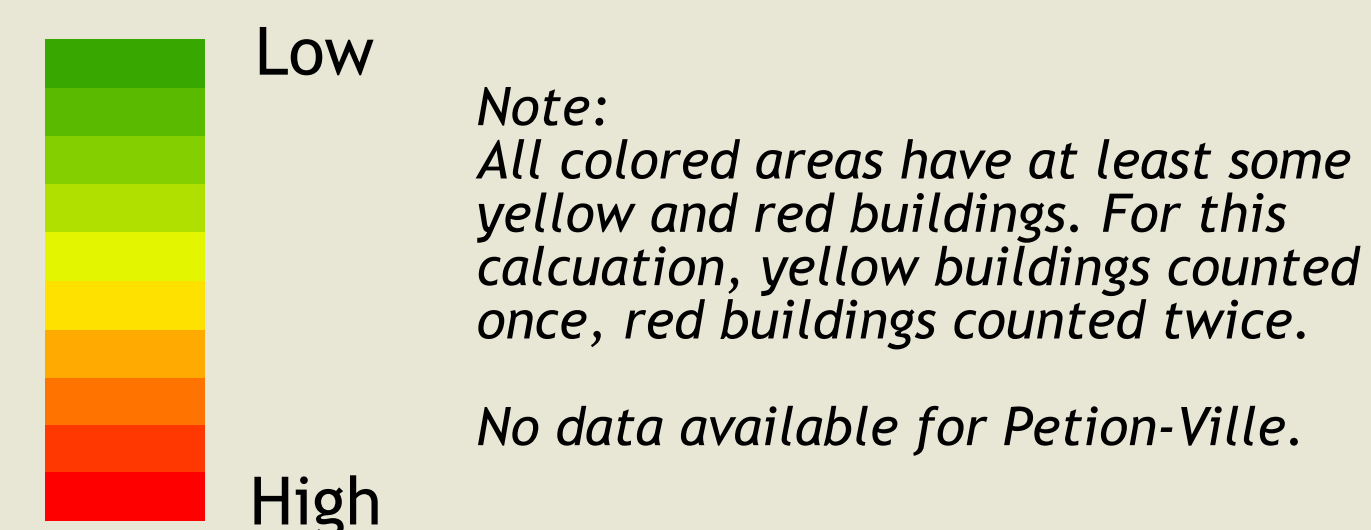
DAMAGED AND DESTROYED BUILDING DENSITY AND OTI RUBBLE ACTIVITIES

LEGEND

OTI Activities Since January 2010

- Chemonics
- DAI

Density of Damaged and Destroyed (Yellow and Red) Buildings from MTPTC Building Assessment Data



Current OTI Partner Focus Areas

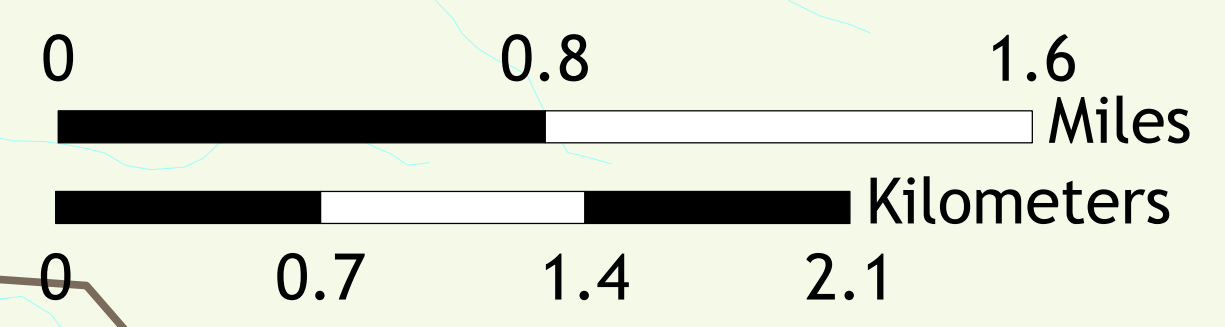
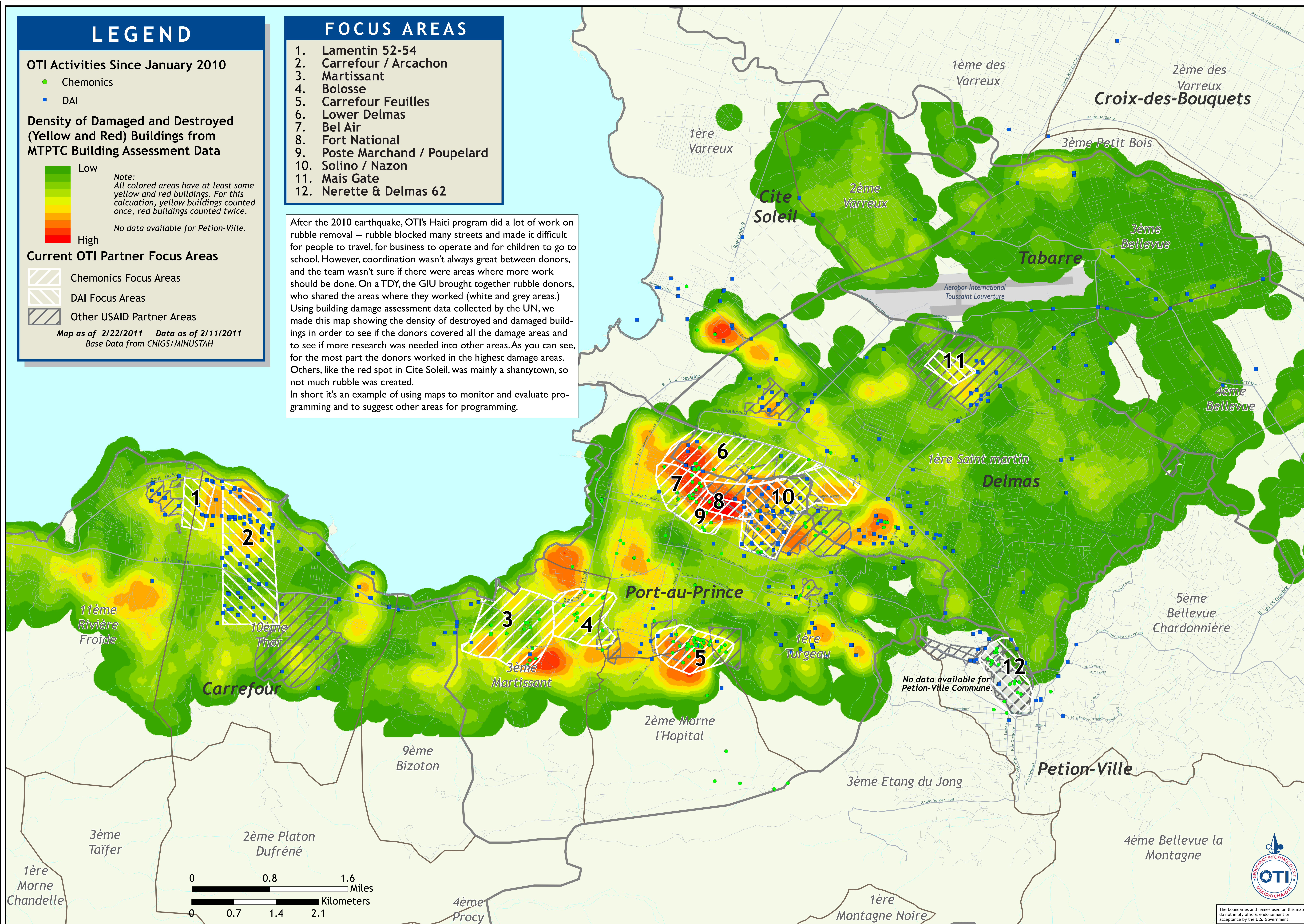
- Chemonics Focus Areas
- DAI Focus Areas
- Other USAID Partner Areas

Map as of 2/22/2011 Data as of 2/11/2011
Base Data from CNIGS/MINUSTAH

FOCUS AREAS

1. Lamentin 52-54
2. Carrefour / Arcachon
3. Martissant
4. Bolosse
5. Carrefour Feuilles
6. Lower Delmas
7. Bel Air
8. Fort National
9. Poste Marchand / Poupelard
10. Solino / Nazon
11. Mais Gate
12. Nerette & Delmas 62

After the 2010 earthquake, OTI's Haiti program did a lot of work on rubble removal -- rubble blocked many streets and made it difficult for people to travel, for business to operate and for children to go to school. However, coordination wasn't always great between donors, and the team wasn't sure if there were areas where more work should be done. On a TDY, the GIU brought together rubble donors, who shared the areas where they worked (white and grey areas.) Using building damage assessment data collected by the UN, we made this map showing the density of destroyed and damaged buildings in order to see if the donors covered all the damage areas and to see if more research was needed into other areas. As you can see, for the most part the donors worked in the highest damage areas. Others, like the red spot in Cite Soleil, was mainly a shantytown, so not much rubble was created. In short it's an example of using maps to monitor and evaluate programming and to suggest other areas for programming.



The boundaries and names used on this map do not imply official endorsement or acceptance by the U.S. Government.